



NVIDIA Control Panel

Quick Start Guide

Driver Release 100 for Windows
NVIDIA Corporation
January 2007

Published by
NVIDIA Corporation
2701 San Tomas Expressway
Santa Clara, CA 95050

Copyright © 2006, 2007 NVIDIA Corporation. All rights reserved.

This software may not, in whole or in part, be copied through any means, mechanical, electromechanical, or otherwise, without the express permission of NVIDIA Corporation.

Information furnished is believed to be accurate and reliable. However, NVIDIA assumes no responsibility for the consequences of use of such information nor for any infringement of patents or other rights of third parties, which may result from its use. No License is granted by implication or otherwise under any patent or patent rights of NVIDIA Corporation.

Specifications mentioned in the software are subject to change without notice.

NVIDIA Corporation products are not authorized for use as critical components in life support devices or systems without express written approval of NVIDIA Corporation.

NVIDIA, the NVIDIA logo, Detonator, Digital Vibrance Control, ForceWare, GeForce, nForce, nView, NVKeystone, NVRotate, Personal Cinema, PowerMizer, Quadro, RIVA, TNT, TNT2, TwinView, and Vanta are registered trademarks or trademarks of NVIDIA Corporation in the United States and/or other countries.

International Color Consortium and the ICC logo are registered trademarks of the International Color Consortium. Intel and Pentium are registered trademarks of Intel. DirectX, Microsoft, Microsoft Internet Explorer logo, Outlook, PowerPoint, Windows, Windows logo, Windows NT, and/or other Microsoft products referenced in this guide are either registered trademarks or trademarks of Microsoft Corporation in the U.S. and/or other countries. OpenGL is a registered trademark of Silicon Graphics Inc. Other company and product names may be trademarks or registered trademarks of the respective owners with which they are associated.



NVIDIA.

NVIDIA Corporation
2701 San Tomas Expressway
Santa Clara, CA 95050
www.nvidia.com



Table of Contents



1. Introduction

About the NVIDIA Control Panel	2
Getting Support and Information	4

2. System Requirements and Driver Installation

Hardware and Software Support	8
Installing Your NVIDIA ForceWare Graphics Driver Under Windows XP	10
Installing Your NVIDIA ForceWare Graphics Driver Under Windows Vista	13

3. Understanding the NVIDIA Control Panel

Opening and Closing the New NVIDIA Control Panel	18
About the NVIDIA Control Panel Interface	19
Navigating Through the Program	24
Using the Menu Bar	25

4. Accomplishing NVIDIA Control Panel Tasks

Starting the NVIDIA Control Panel	30
Using the Display Category Page	32
Using the Video & Television Category Page	33
Using the 3D Settings Category Page	35
Using the Mobile Category Page	36
Using the Workstation Category Page	37



List of Figures



Figure 3.1	NVIDIA Control Panel Home Page	19
Figure 3.2	Toolbar Options	22
Figure 3.3	Navigation Options	24



List of Tables



Table 2.1	Hard Disk Space Requirements—English.	10
Table 2.2	Hard Disk Space Requirements—Non-English Languages.	10
Table 2.3	Hard Disk Space Requirements—Full International Package.	11
Table 3.1	Help Menu Panel.	21
Table 3.2	File Menu Commands	25
Table 3.3	Edit Menu Commands.	25
Table 3.4	View Menu Commands	26
Table 3.5	Help Menu Commands	27
Table 3.6	Profiles Menu Commands.	27
Table 3.7	Display Menu Commands.	27

INTRODUCTION

This *quick start* is addressed to users of the NVIDIA® Control Panel software. This guide focuses on getting you up and running with your NVIDIA software.

For technical details on the features and benefits of the NVIDIA Control Panel software and details about supported products, drivers, and other software, refer to the NVIDIA web page — www.nvidia.com.

This chapter discusses the following major topics:

- “About the NVIDIA Control Panel” on page 2
- “Getting Support and Information” on page 4

About the NVIDIA Control Panel

Welcome to the NVIDIA Control Panel, designed for Microsoft® Windows® XP and Windows Vista. You can use NVIDIA Control Panel to control your NVIDIA hardware and access other NVIDIA software installed on your system.

NVIDIA Driver Controls

Overview

In addition to setting up basic display configurations such as display resolution, refresh rate, and multiple display use, you can:

- Tune your 3D settings with real-time preview to maximize performance or image quality
- Customize how 3D applications work in your system
- Adjust your screen colors and contrast
- Set custom timings
- Control video image settings
- Change your HDTV format
- Control your notebook system power using PowerMizer
- Control special workstation features such as Frame Synchronization.

Feature Differences from the Classic Control Panel

The following are features that were available in the NVIDIA classic control panel, but which are *not* available in the new NVIDIA Control Panel:

- Creating/Importing Color Profiles
- High Resolution Scalable Desktop
- MultiView Display Mode (for NVIDIA Quadro NVS graphics cards)
- Video Zoom
- Edge Blending
- nView Desktop Manager

nView Desktop Manager is available as a separate applet for Windows XP only.

Other NVIDIA Software Applications

If installed, other NVIDIA software that you can access from the NVIDIA Control Panel includes:

- NVIDIA nTune™
- NVIDIA MediaShield™
- NVIDIA Network Access Manager

See the respective user documentation for information about these applications and instructions on how to use them.

Getting Support and Information

Online Help

There are multiple ways to get online help:

- To browse the help file, select **NVIDIA Control Panel Help** from the **Help** menu or click **Contents** in the **Help** list in the Secondary Tasks Area.
- Press **F1** at any page.
- To access help by using a keyword, click **Index** in the **Help** list in the Secondary Tasks Area, or if the online help is already open click the **Index** button.
- To search the help, click **Search** in the **Help** list in the Secondary Tasks Area, or if the online help is already open click the **Search** button.

Also, when a setting is disabled (grayed out) and you place the cursor on the setting, the User Assistance area indicates the reason it is disabled.

Technical Support

You can get technical support either from the NVIDIA website or by e-mail.

To send an e-mail:

- In the Secondary Tasks Area, click **Contact NVIDIA** in the **Help** list to open your e-mail program with the NVIDIA Technical Support address entered.

To access the NVIDIA Technical Support web page go the following web address:

<http://www.nvidia.com/page/support.html>

System Information

You can get detailed information about your system and the NVIDIA Control Panel configuration as well as version and copyright information.

- To view copyright and version information about the NVIDIA Control Panel:

From the **Help** menu, select **About NVIDIA Control Panel**.

- To view detailed system information:

From the **Help** menu, select **System Information** and click on any of the tabs in the System Information dialog box.

SYSTEM REQUIREMENTS AND DRIVER INSTALLATION

This chapter lists the system requirements for installing the NVIDIA ForceWare Release 100 graphics driver, and provides installation instructions. It contains the following major sections:

- “Hardware and Software Support” on page 8
- “Installing Your NVIDIA ForceWare Graphics Driver Under Windows XP” on page 10
- “Installing Your NVIDIA ForceWare Graphics Driver Under Windows Vista” on page 13

Hardware and Software Support

This section lists the

- [Supported Operating Systems](#)
- [Supported NVIDIA Products](#)
- [Supported Languages](#)

Supported Operating Systems

Release 100 NVIDIA ForceWare Graphics drivers are available for the following Microsoft® Windows® operating systems:

- Windows XP Media Center Edition 2005 Update Rollup 2
- Windows XP Media Center Edition 2005
- Windows XP Media Center Edition 2004
- Windows XP Professional
- Windows XP Home Edition
- Windows XP Professional x64 Edition
- Windows Server 2003 x64 Edition
- Windows Vista Home Basic
- Windows Vista Home Premium
- Windows Vista Business
- Windows Vista Enterprise Edition
- Windows Vista Ultimate

Supported NVIDIA Products

Refer to the release notes and NVIDIA driver download site for the list of products supported by the Release 100 driver version that you have installed on your computer.

Supported Languages

The Release 100 NVIDIA ForceWare Graphics Driver supports the following languages in the NVIDIA Control Panel:

English (USA)	German	Portuguese (Euro/Iberian)
English (UK)	Greek	Russian
Arabic	Hebrew	Slovak
Chinese (Simplified)	Hungarian	Slovenian
Chinese (Traditional)	Italian	Spanish
Czech	Japanese	Spanish (Latin America)
Danish	Korean	Swedish
Dutch	Norwegian	Thai
Finnish	Polish	Turkish
French	Portuguese (Brazil)	

Installing Your NVIDIA ForceWare Graphics Driver Under Windows XP

Before You Begin

- If you do not have System Administrator access privileges, it is assumed that the appropriate person with System Administrator access in your organization will set up and install the NVIDIA graphics driver software on your computer.
- The installation process copies all necessary files for operation into the appropriate directories.
- The NVIDIA Control Panel system files are copied to your **Windows\System** directory.

System Requirements

NVIDIA Control Panel requires the following minimum system configuration:

- A 600 megahertz (MHz) processor, such as an Intel Pentium III, Advanced Micro Devices (AMD) Athlon, or equivalent processor
- 128 megabytes (MB) of RAM
- The minimum hard disk space requirement for each operating system are listed in [Table 2.1](#), [Table 2.2](#), and [Table 2.3](#):

Table 2.1 Hard Disk Space Requirements—English

Operating System	Minimum Hard Disk Space
Windows XP (32-bit editions)	43.6 MB
Windows XP (64-bit editions)	51.4 MB

Table 2.2 Hard Disk Space Requirements—Non-English Languages

Operating System	Minimum Hard Disk Space
Windows XP (32-bit editions)	25.2 MB
Windows XP (64-bit editions)	20.4 MB

Table 2.3 Hard Disk Space Requirements—Full International Package

Operating System	Minimum Hard Disk Space
Windows XP (32-bit editions)	68.8 MB
Windows XP (64-bit editions)	71.8 MB

To optimize the performance of the NVIDIA Control Panel, the following system requirements are recommended:

- A 1.5 gigahertz (GHz) processor, such as an Intel Pentium 4, an AMD Athlon XP 1500+, or equivalent processor
- 256 megabytes (MB) of RAM
- An Internet connection

System Requirement for NVIDIA SLI Technology (Advanced Users)

If you are an advanced user of graphics and hardware and want to use NVIDIA SLI technology, your system must have the following key hardware components:

- **An SLI-ready motherboard** that supports a PCI Express chipset and dual x16 connectors for two NVIDIA PCI Express graphics cards
- Two NVIDIA-based SLI-ready graphics cards that are identical in terms of GPU.

See http://www.slizone.com/page/slizone_learn.html for other graphics card requirements.

- One NVIDIA SLI Connector

Uninstalling the NVIDIA Display Driver—Windows XP

Note: It is highly recommended that you follow the steps in this section to completely uninstall the NVIDIA Display Driver software before updating to a new version of the software.

To uninstall the nView software, follow these steps:

- 1 From the Windows taskbar, click **Start > Settings > Control Panel** to open the Control Panel window.
- 2 Double-click the **Add/Remove Programs** item.
- 3 Click the **NVIDIA Display Driver** item from the list.

4 Click **Change/Remove**.

5 Click **Yes** to continue.

A prompt appears asking whether you want to delete all of the saved nView profiles.

- If you click **Yes**, all of the nView software and all of your saved profiles will be deleted.
- If you click **No**, the nView software is removed, but the profile files are saved in the `Windows\nView` directory on your hard disk.

Your system now restarts.

Installing the NVIDIA ForceWare Graphics Drivers—Windows XP

- 1** Follow the instructions on the NVIDIA .com web site driver download page to locate the appropriate driver to download, based on your hardware and operating system.
- 2** Click the driver download link.
- 3** The license agreement dialog box appears.
- 4** Click **Accept** if you accept the terms of the agreement, then either open the file or save the file to your PC and open it later.

Opening the EXE file launches the NVIDIA InstallShield Wizard.

- 5** Follow the instructions in the NVIDIA InstallShield Wizard to complete the installation.

Installing Your NVIDIA ForceWare Graphics Driver Under Windows Vista

Before You Begin

- If you do not have System Administrator access privileges, it is assumed that the appropriate person with System Administrator access in your organization will set up and install the NVIDIA graphics driver software on your computer.
- The installation process copies all necessary files for operation into the appropriate directories.
- The NVIDIA Control Panel system files are copied to your **Windows\System** directory.

System Requirements

NVIDIA Control Panel requires the following minimum system configuration:

- A 600 megahertz (MHz) processor, such as an Intel Pentium III, Advanced Micro Devices (AMD) Athlon, or equivalent processor
- 128 megabytes (MB) of RAM

To optimize the performance of the NVIDIA Control Panel, the following system requirements are recommended:

- A 1.5 gigahertz (GHz) processor, such as an Intel Pentium 4, an AMD Athlon XP 1500+, or equivalent processor
- 256 megabytes (MB) of RAM
- An Internet connection

System Requirement for NVIDIA SLI Technology (Advanced Users)

If you are an advanced user of graphics and hardware and want to use NVIDIA SLI technology, your system must have the following key hardware components:

- **An SLI-ready motherboard** that supports a PCI Express chipset and dual x16 connectors for two NVIDIA PCI Express graphics cards
- Two NVIDIA-based SLI-ready graphics cards that are identical in terms of GPU.

See http://www.slizone.com/page/slizone_learn.html for other graphics card requirements.

- One NVIDIA SLI Connector
-

Minimum Hard Disk Space

The hard disk space requirement is minimum 33 MB for English-only, and 56 MB for International.

Uninstalling the NVIDIA Display Driver

Note: It is highly recommended that you uninstall the NVIDIA Display Driver software before updating to a new version of the software.

To uninstall the nView software, follow these steps:

- 1 Click the desktop Start icon, then click Control Panel.
- 2 Double-click Programs and Features
- 3 Right-click "NVIDIA Drivers", then click **Uninstall/Change**.
- 4 Follow the instructions to uninstall the driver.
- 5 Reboot your PC when finished.

Installing the NVIDIA ForceWare Graphics Drivers—Windows Vista

- 1 Follow the instructions on the NVIDIA .com Web site driver download page to locate the appropriate driver to download, based on your hardware and operating system.
 - 2 Click the driver download link.
 - 3 The license agreement dialog box appears.
 - 4 Click **Accept** if you accept the terms of the agreement, then either open the file or save the file to your PC and open it later.
Opening the NVIDIA driver installation .EXE file launches the NVIDIA InstallShield Wizard.
 - 5 Follow the instructions in the NVIDIA InstallShield Wizard to complete the installation.
- Note:** After the driver installation, Windows may default to 16-bpp color and disable the Desktop Window Manager (DWM). To work around this issue, set the color to 32-bpp and then reboot the PC.

UNDERSTANDING THE NVIDIA CONTROL PANEL

This chapter describes the NVIDIA Control Panel in the following sections:

- “Opening and Closing the New NVIDIA Control Panel” on page 18
- “About the NVIDIA Control Panel Interface” on page 19
- “Navigating Through the Program” on page 24
- “Using the Menu Bar” on page 25

Opening and Closing the New NVIDIA Control Panel

- You can open the NVIDIA Control Panel in several ways:
 - Right-click the Windows XP or Windows Vista desktop, then click **NVIDIA Control Panel** from the context menu, or

For Windows XP

- From the Windows **Start** menu, select **Control Panel**, then in the **Control Panel** window, double-click on the NVIDIA Control Panel icon.



NVIDIA
Control Panel

For Windows Vista

- From the *Classic View* of the Windows Vista Control Panel, click the NVIDIA Control Panel icon, or



NVIDIA
Control Panel

- From the *Control Panel Home* view of the Windows Vista Control Panel, click **Additional Options** and then click **NVIDIA Control Panel** from the Additional Options page.
- To close the NVIDIA Control Panel,
 - From the **File** menu, select **Exit**, or
 - Click the **Close** box in the upper right corner of the program window.

About the NVIDIA Control Panel Interface

The NVIDIA Control Panel provides an easy-to-use interface for managing your system. The NVIDIA Control Panel user interface consists of these main areas, as shown in Figure 3.1:

- Primary Tasks Area
- Explorer Bar
- Menu bar
- Toolbar .

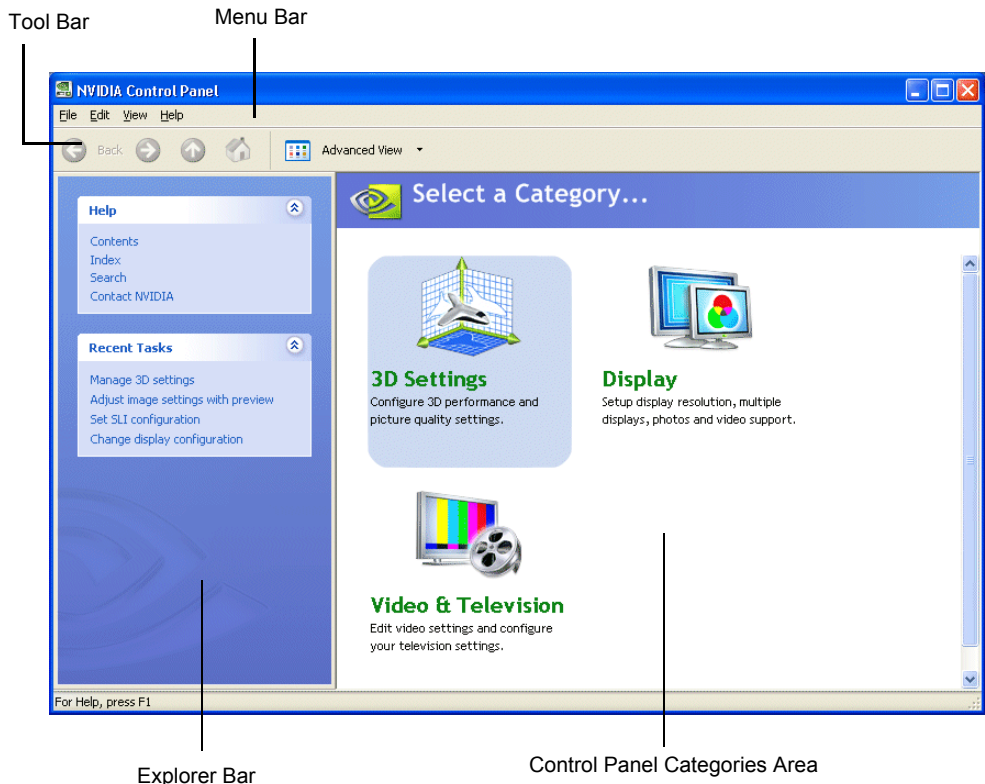


Figure 3.1 NVIDIA Control Panel Home Page

When you start the program, the NVIDIA Control Panel home page is displayed. The home page is the starting point and provides access to application task pages which you can use for managing your system.

Using the Control Panel Categories Area

The *Control Panel Categories Area*, in the right pane, displays the main navigation pages such as the Select a Category page, application task lists, and application task pages. This area of the screen is where you will focus most of your attention as you use the NVIDIA Control Panel to accomplish your goals.

About NVIDIA Control Panel Categories

When you first install the NVIDIA Control Panel, it includes the Display and Video & Television applications—called *categories* in the NVIDIA Control Panel home page—which allow you to manage your display, video, and television settings. You can install additional applications that enable you to perform tasks such as optimizing your graphics display for games or adjusting your system performance.

Icons for each the applications installed on your system appear on the home page in the Control panel Categories Area. The specific icons displayed depend on the applications you have installed on your system. For a list of categories you can install, see the NVIDIA website at www.nvidia.com.

Selecting Categories and Performing Tasks

All of the tasks you can accomplish using the NVIDIA Control Panel are accessed through the application categories. To open an application category, click on the category icon in the Control Panel Categories Area of the home page.

If you click on the category icon, a page is displayed listing the tasks available for that category. For example, if you click on the Display icon, the Display tasks are listed in the Control Panel Categories Area.

Using the Explorer Bar

The *Explorer Bar*, in the left pane, lists tasks that don't directly accomplish the primary task but are related to the primary task. Explorer Bar tasks might bring up dialog boxes, change the visual presentation of the screen's contents, or navigate to a different screen.

The Explorer Bar contains the following panes:

- Help
- Recent Tasks
- Related Tasks

Each of these panes are described in the following sections.

Help Pane

The Help pane commands allow you to access online help, open your web browser, or contact NVIDIA Technical Support.

Table 3.1 Help Menu Panel

Help Command	Description
Contents	Click to open the online help with the Contents tab open. Use the Contents tab to browse the online help
Index	Click to open the online help with the Index tab open. Use the Index tab to search using a keyword.
Search	Click to open the online help with the Search tab open. Use the Search tab to search for one more words that you specify.
Contact NVIDIA	Click to open your email program and send an email message to NVIDIA Technical Support.

Recent Tasks Pane

Using the Recent Tasks pane, you can quickly navigate to tasks that you have recently performed. Tasks are displayed with the most recent tasks at the top of the list.

Related Tasks Pane

Using the Related Tasks pane displays tasks related to the task currently open in the Control Panel Categories Area.

Using the Tool Bar

The *Toolbar* (optional) provides quick access to common tasks such as switching between Standard and Advanced views. Navigating between the home page and other task pages, and so on.

To show or hide the toolbar:

- From the **View** menu, select **Toolbar**.

When the toolbar is displayed, a check mark appears next to the **Toolbar > Standard** command on the menu. .

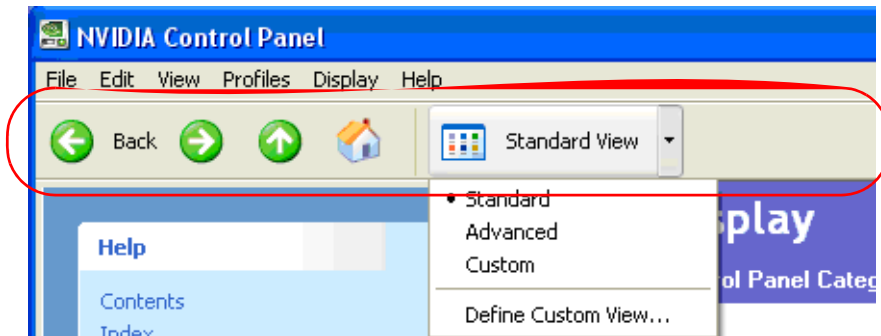


Figure 3.2 Toolbar Options

Working with Views

The currently selected view determines what options are available. There are three available views:

- Standard
- Advanced
- Custom

Most commands are available for both Standard and Advanced views. However, some options are available only if the Advanced view is selected before opening the application category page. Also, task page options may differ depending on the selected view. If the command you're looking for is not displayed, return to the home page, select a different view, and return to the task page.

To change the view:

- From the **View** menu, select **Standard**, **Advanced**, or **Custom**.

Note: For the Custom command to be available, you must define a custom view as described in the following section.

Defining Custom Views

You can customize NVIDIA Control Panel to display only the application category pages you want to see and use.

To specify which the pages to display:

- 1** Select **View > Define Custom View...** or for quicker access, use the toolbar if you have it enabled.
- 2** On the **Create Custom View** page, for each application category that appears, select (check) the check boxes for the pages that you want to view and click **OK**.
- 3** To leave the Custom View mode, select either **Standard** or **Advanced** from the **View** menu or for quicker access, use the toolbar if you have it enabled.
- 4** To switch back to your custom view, select **Custom**.

Navigating Through the Program

You can navigate through the NVIDIA Control Panel program using:

- The navigation links under the page title of the Control Panel Categories Area
- The Forward and Back buttons in the toolbar
- Navigation text buttons in the Navigation list of the explorer bar
- Recent tasks in the Recent Tasks list of the explorer bar
- Related tasks in the Related Tasks of the explorer bar

Each of these are shown in [Figure 3.3](#)

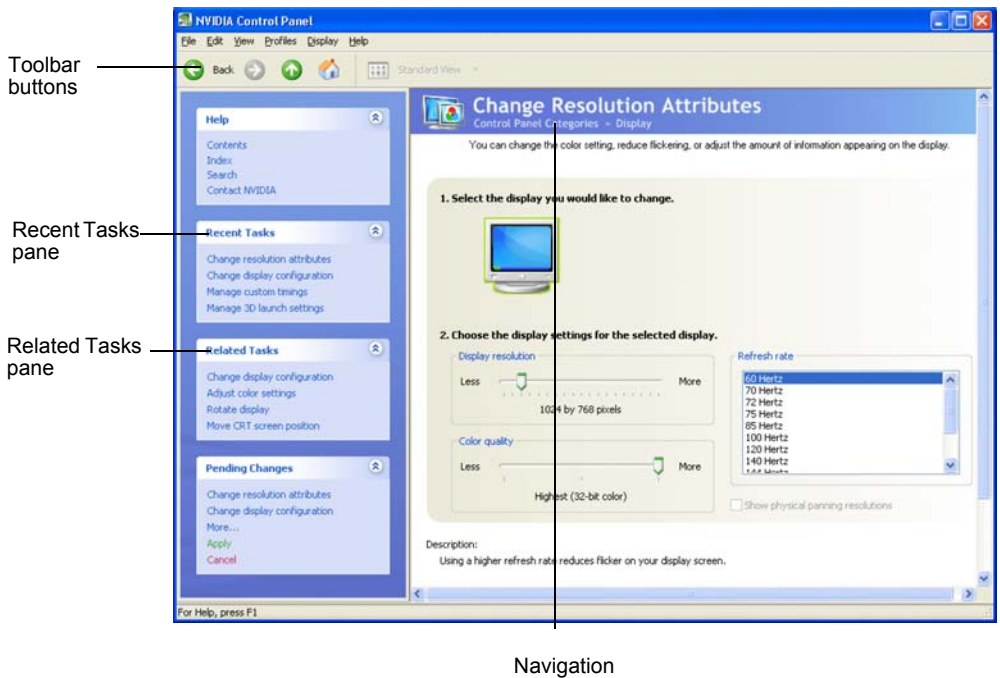


Figure 3.3 Navigation Options

Using the Menu Bar

The *Menu bar* contains standard Windows menus and menus specific to the NVIDIA Control Panel, such as the View and Profiles menus.

Menus that are available on the menu bar may vary, depending on the NVIDIA Control Panel category (such as, Display, Mobile, 3D Settings, or other category) you are using.

File Menu

Commands related to printing, applying changes, and exiting the program are available on the **File** menu.

Table 3.2 File Menu Commands

File Menu Command	Description
Print...	Print the current task page.
Print Preview....	Preview the page before sending it to the printer.
Print Setup...	Open the Print Setup dialog box to adjust your printer properties.
Exit	Close the NVIDIA Control Panel program.

Edit Menu

Commands related to cutting, copying, pasting, and selecting items are available on the **Edit** menu.

Table 3.3 Edit Menu Commands

Edit Menu Command	Description
Cut	Cut the selected text and place in the clipboard.
Copy	Copy the selected text and place in the clipboard.
Paste	Paste the text currently in the clipboard to the location of the Windows cursor.
Select All	Select all items on the current page.

View Menu

Commands related to viewing the various pages in the NVIDIA Control Panel application modules are available on the **View** menu.

Table 3.4 View Menu Commands

View Menu Command	Description
Toolbars	Lets you add a standard toolbar to navigate between the Home Page and other NVIDIA Control Panel task pages, quickly access common tasks such as switching between Standard , Advanced , and Custom views, as well as quickly create custom views using the Define Custom View command.
Explorer Bar	Select this command to toggle between showing or hiding one of more of the following groups of Help command or other tasks in the Secondary Tasks Area of your NVIDIA Control Panel. When the Explorer Bar commands appear with a check mark, this means that those commands are viewable in the secondary task area of your NVIDIA Control Panel.
Classic Navigation Pane	Select to toggle between showing or hiding a navigation pane that is added on the right side of your NVIDIA Control Panel interface. When the Classic Navigation Pane command appears with a check mark, this means that the navigation pane is visible.
Standard	Select to view and access the majority of commonly used and simpler tasks in the NVIDIA Control Panel applications. When the Standard command appears with a check mark, this means that the Standard view is currently active on your NVIDIA Control Panel active.
Advanced	Select to view and access certain complex tasks in the NVIDIA Control Panel applications. These tasks often require some advanced experience using graphics hardware and software (drivers). When the Advanced command appears with a check mark, this means that the Advanced view is currently active on your NVIDIA Control Panel.
Custom	Select to choose a custom view. This command appears on the View menu <i>only</i> if you have used the Define Custom Views command to customize showing/hiding specific screens.
Define Custom View	To see only those application pages you want to see and use based on the application modules (Display, 3D Settings, etc.) that are installed on your system, select Define Custom Views from the View menu.
Add Desktop Context Menu	(Windows XP only) This is selected by default, and adds the NVIDIA Control Panel menu item to the desktop context menu.
Show Notification Tray Icon	(Windows XP only) Select to show the NVIDIA Control Panel notification tray icon in the Windows taskbar notification area. Clicking the NVIDIA Control Panel notification icon offers a quick way to configure key NVIDIA Control Panel settings.

Help Menu

Commands related to accessing help, system information, and copyright and version information are available on the **Help** menu.

Table 3.5 Help Menu Commands

Help Menu Command	Description
NVIDIA Control Panel Help	Access the NVIDIA Control Panel online help.
System Information	View detailed information about your system and the NVIDIA Control Panel configuration.
About NVIDIA Control Panel	View NVIDIA Control Panel version and copyright information.

Profiles Menu

This menu item appears only when certain category pages are open.

Commands related to saving, loading, and deleting profiles are available on the **Profiles** menu.

Table 3.6 Profiles Menu Commands

Profiles Menu Command	Description
Load...	Load a profile of display settings you have previously saved. Click to open the Load Desktop Profile dialog box and select a .nvp file.
Save...	Save the current configuration to a profile file. Click to open the Save Desktop Profile and enter a name and path for the .nvp file.
Delete...	Delete a profile. Click to open the Delete Desktop Profile dialog box and locate a profile to delete.

Display Menu

This menu item appears only when the Display category page is open.

Commands related to your displays are available on the **Display** menu.

Table 3.7 Display Menu Commands

Display Menu Command	Description
Identify Displays	Select to identify the displays configured with your system.

ACCOMPLISHING NVIDIA CONTROL PANEL TASKS

This chapter provides instructions on how to use the NVIDIA Control Panel to accomplish common tasks. It contains the following sections:

- [Starting the NVIDIA Control Panel](#)
- [Using the Display Category Page](#)
- [Using the Video & Television Category Page](#)
- [Using the 3D Settings Category Page](#)
- [Using the Mobile Category Page](#)
- [Using the Workstation Category Page](#)

Note: For Windows Vista – Several features are currently under development for Windows Vista and are not yet supported in the NVIDIA Control Panel. Consult the release notes for the latest list of unsupported features.

Starting the NVIDIA Control Panel

1 Launch the NVIDIA Control Panel:

Under Windows XP:

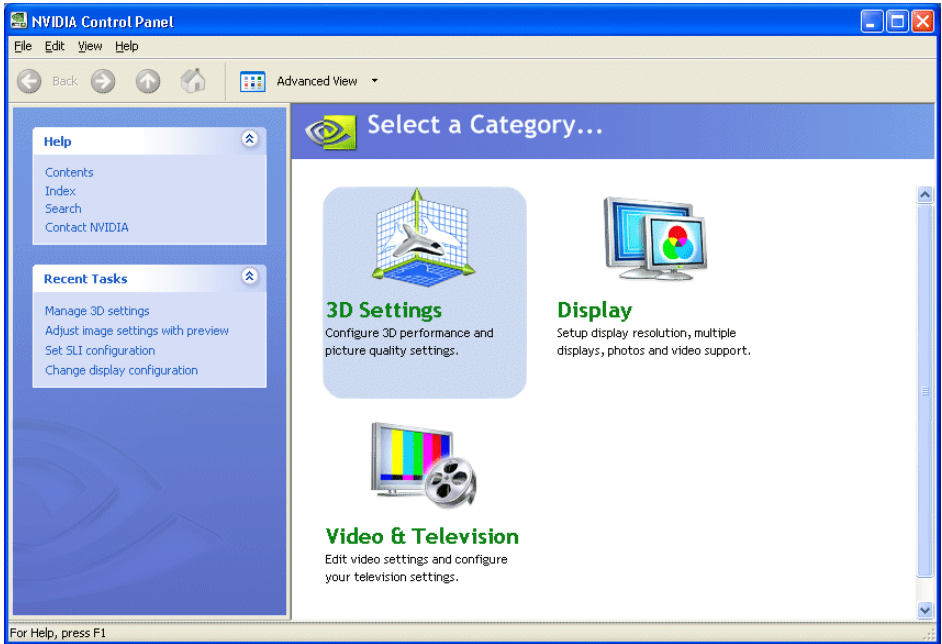
- Right-click the Windows desktop, then click **NVIDIA Control Panel** from the context menu, or
- From the Windows **Start** menu, select **Control Panel**, then in the **Control Panel** window, double-click the NVIDIA Control Panel icon.



Under Windows Vista:

- a** Click the Start icon, then from the Start menu click **Control Panel**
- b** From the *Classic View* of the Windows Vista Control Panel, click the NVIDIA Control Panel icon, or

From the *Control Panel Home* view of the Windows Vista Control Panel, click **Additional Options** and then click **NVIDIA Control Panel** from the Additional Options page. .



The categories that appear in the **Select a Category** page depend on which NVIDIA software is installed on your system. For example, the Mobile category is not available on desktop systems.

2 Click one of the categories to open a specific task page.

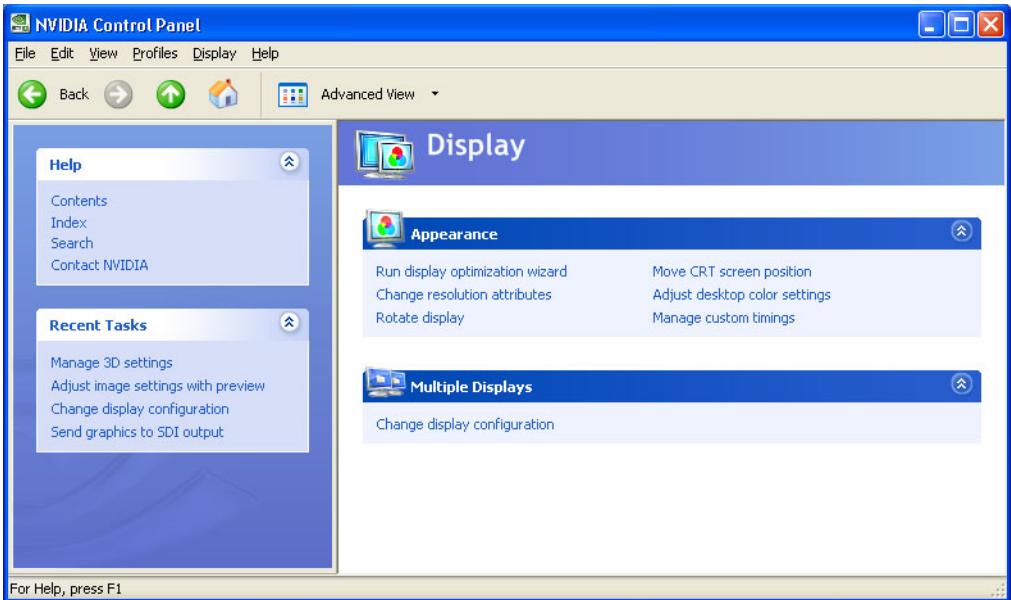
Each category page lists different tasks that you can accomplish, and each task page provides instructions on how to accomplish what you want. Move the cursor over listed options to see a description and typical usage scenario for that option.

Detailed instructions for each task are also available through the online help.

Using the Display Category Page

Note: For Windows Vista – Support for some features under Windows Vista is in development and may not be available with your ForceWare graphics driver version. Consult the release notes for the latest list of unsupported features.

- 1 Click Display from the NVIDIA Control Panel Select a Category page.



The actual tasks available on your system depend on your system hardware, such as the number and type of displays connected.

- 2 Use the Display page to:
 - Run the wizard to optimize your display configuration
 - Change the display resolution
 - Change the scaling on your flat panel display
 - Adjust color settings
 - Rotate the display
 - Adjust custom timings (available under Advanced View)
 - Configure multiple displays, including Spanning or Clone modes.

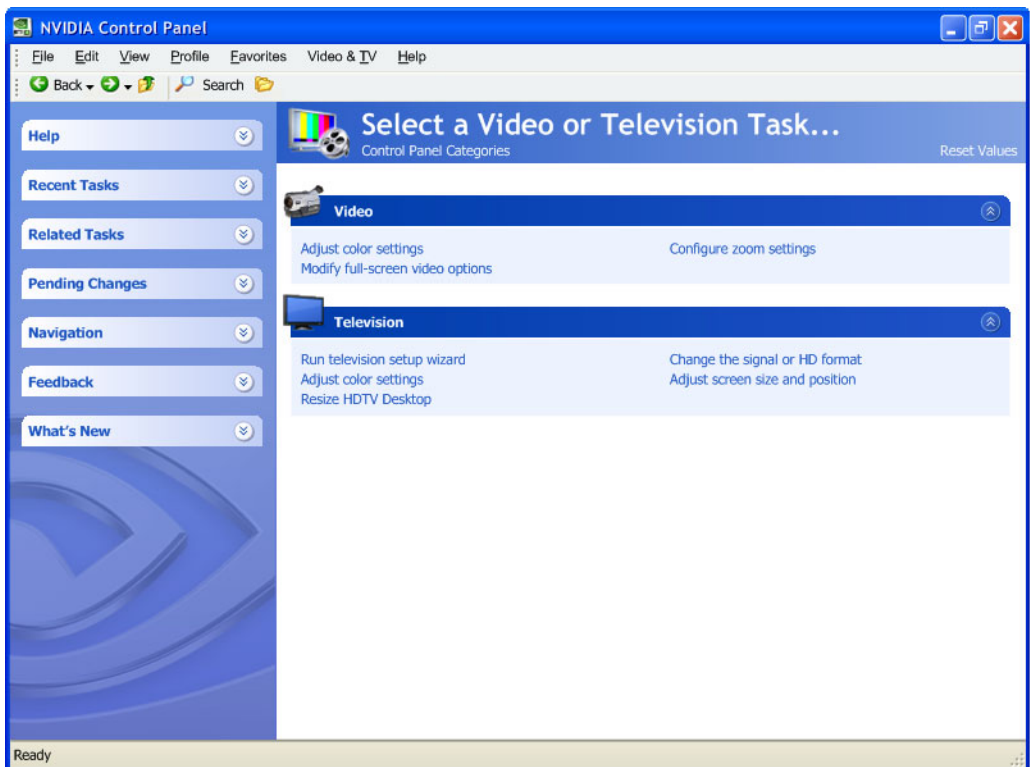
Note: Spanning modes will not be available under Windows Vista.

Using the Video & Television Category Page

Notes for Windows Vista

- Under Windows Vista, this page appears only when a TV is connected and enabled using the **Display** category **Change display configuration** page.
- Support for some features under Windows Vista is in development and may not be available with your ForceWare graphics driver version. Consult the release notes for the latest list of unsupported features.

- 1 Click Video & Television from the NVIDIA Control Panel Select a Category page.



The actual tasks available on your system depend on your system hardware, such as whether or not you have a TV connected.

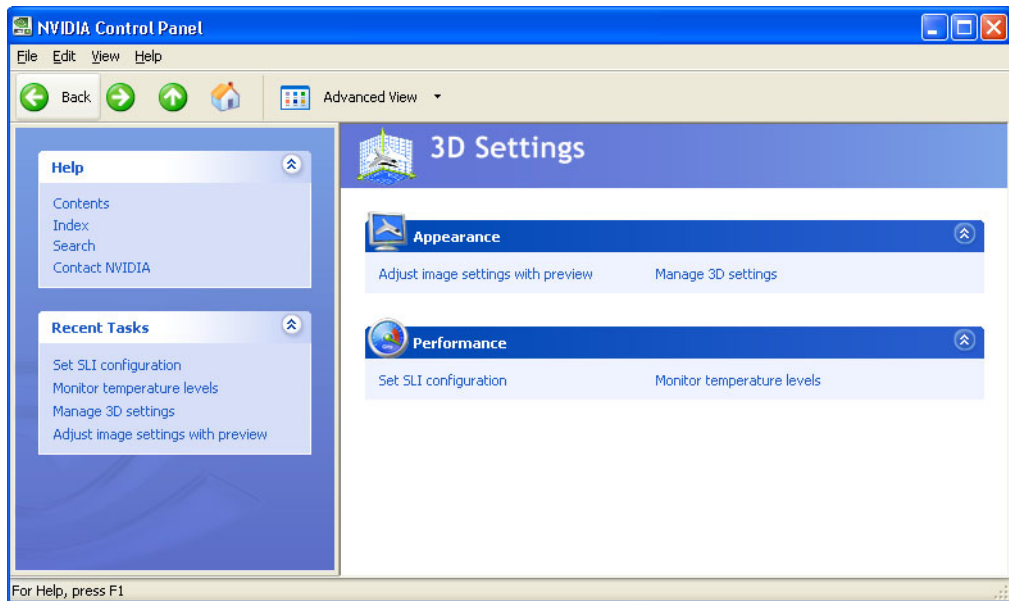
2 Use the Video & Television page to:

- Adjust your television picture quality and video color settings for the best possible viewing in its environment
- Enable full screen video mirroring so that you can view full screen video content on one display while the other display has the smaller video window with visible controls
- Change the position and size of the desktop/video to best fit your television or HDTV (high definition television) screen
- Change the signal format to use for your standard television or HDTV as well as change country-specific signal or the HDTV format

Using the 3D Settings Category Page

Note: For Windows Vista – Support for some features under Windows Vista is in development and may not be available with your ForceWare graphics driver version. Consult the release notes for the latest list of unsupported features.

- 1 Click 3D Settings from the NVIDIA Control Panel Select a Category page.



The actual tasks available on your system depend on your system hardware, such as whether or not you have an SLI-ready system.

- 2 Use the 3D Settings page to:
 - Change the image and rendering settings of your 3D applications and games that utilize Direct3D and OpenGL technology
 - Assign specific 3D settings to a game so that these settings automatically load when a game is launched (available under Advanced view)
 - Set up your SLI or multi-GPU configuration

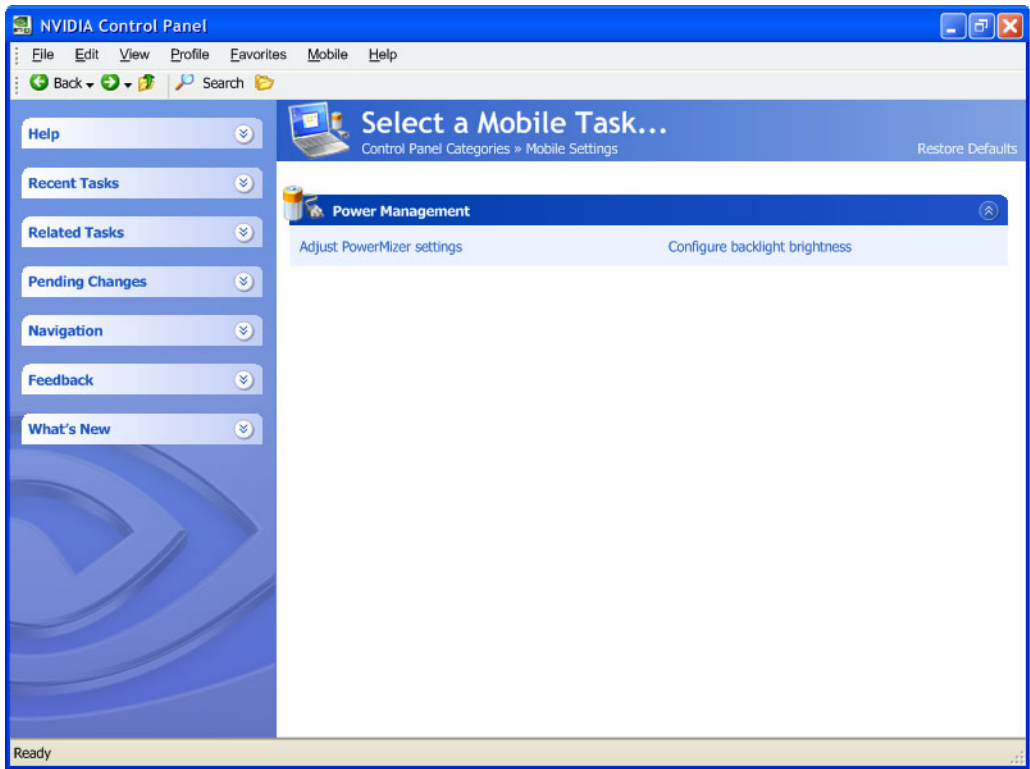
Note: GPU temperature monitoring and GPU overclocking features are not included in the 3D Settings page in Release 95. To use this functionality you must install NVIDIA nTune software.

Using the Mobile Category Page

The Mobile category is available if the NVIDIA software is installed on a notebook computer.

Note: The Mobile page is not available under Windows Vista.

- 1 Click Mobile from the NVIDIA Control Panel Select a Category page.



The actual tasks available depend on which features are included with your notebook system.

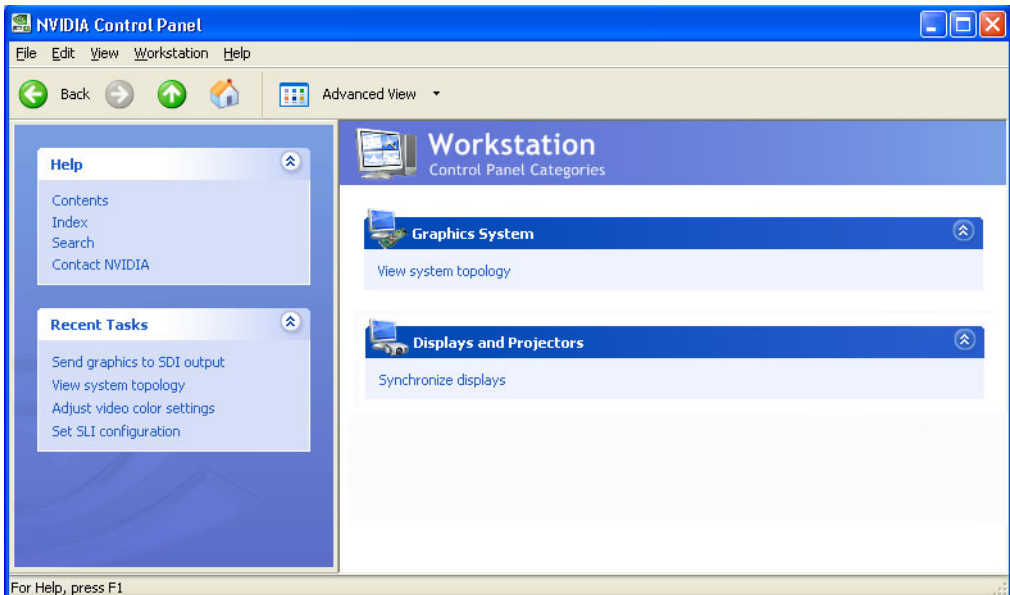
- 2 Use the Mobile page to extend your notebook computer's battery life using :
 - NVIDIA PowerMizer technology
 - NVIDIA SmartDimmer technology

Using the Workstation Category Page

The Workstation category is available if you have an NVIDIA Quadro FX graphics card installed.

Note: For Windows Vista – Workstation features under Windows Vista are in development and may not be available with your ForceWare graphics driver version. Consult the release notes for the latest list of unsupported features.

1 Click Workstation from the NVIDIA Control Panel Select a Category page.



The actual tasks available depend on which NVIDIA Quadro FX product you have installed.

2 Use the Workstation page to:

- Synchronize your displays using frame sync or genlock technology
- View a graphical representation of the displays and graphics cards installed on your system.
- Manage serial digital interface (SDI) output (requires NVIDIA Quadro FX SDI solution.)
- Overlap the edges of adjacent displays.

Note: Edge Blending will not be available under Windows Vista.